

HOISTS AND TROLLEYS

Atlas Copco

Introduction – Air Hoists and Trolleys

Explosion-proof operation and stepless control for a smoother safer lift

Atlas Copco air hoists and trolleys are the industry benchmark for fast, precise and reliable lifting of heavy loads – even in cramped and sometimes hostile industrial environments.



Compact and lightweight, they are easy to control, survive rough handling and provide heavyweight performance.

EXPLOSION PROOF FOR SAFE OPERATION

Our air hoists and trolleys are ideal for lift applications in hazardous environments. All are certified Explosion-proof, to stringent European standards, in compliance with the EU ATEX Directive. Available in five sizes, they offer lift capacities from 250 kg to 5 tons. Hoists are certified to level Ex II 2 GD ck T5 IIC T100°C and trolleys are certified to Ex II 2 GD c T5 IIB T100°C.

SIMPLE INSTALLATION

The trolleys are easy to install. The wheels are designed so that the trolley is equally suitable on both parallel and tapered I-beam section beams. The distance between the wheels is easily adjusted to suit the beam width by turning the suspension yoke.



Selection guide

AIR HOIST SELECTION PROGRAM

The fastest way to choose correct hoists and accessories is by using the Windows based computer program available on our website.

To order your hoist or trolley with accessories factory fitted, simply list all items required and add the

Ordering No. 8990 0001 00

EXAMPLE: To order a 500 kg hoist with motor driven trolley, four button five-metre long pendant control and a load chain for a ten-metre lift, send the following:

| Order to be sent | Comments |
|-------------------|---|
| 1 x 8451 1540 28 | LLA500 ATEX Hoist block |
| 11 x 4310 2293 00 | Load chain for hoist = Required height of lift + 0.5 m, (see technical data for LLA Hoists) |
| 1 x 8451 1520 14 | TLT1000-M-N Motor driven trolley |
| 1 x 4310 2263 90 | 4 button handle + hoist actuator |
| 5 x 4310 2310 96 | Hose set for 4 button pendant control |
| 1 x 8990 0001 00 | Instruction to assemble above items |

- **Precise and stepless speed control** – Through effective stepless control with excellent creep characteristics the LLA air hoists are fast to use over the entire speed range.
- **Heavy duty performance** – These air hoists can continually operate at maximum load with frequent start and stop cycles without risk of damage.
- **Elimination of load sink** – The patented brake mechanism eliminates load-sink when starting lifting, and automatically holds the load if the air supply fails.
- **Compact size** – The small dimensions make the LLA hoists easy to install, even in the most restricted space. Also the low weight means the hoists can easily be moved for maintenance or relocation purposes.
- **Lubrication free.**



| Model | Max lifting capacity kg | Lifting speed at full load | | Chain drops qty | Weight excl chain | | Chain weight | | Required chain-length metre | Air consumption | | Hose size | | Air inlet thread BSP | Ordering No. |
|------------------------------|----------------------------|-------------------------------|--------|--------------------|----------------------|-------|-----------------|-------|-----------------------------------|-----------------|-----|-----------|-----|-------------------------|--------------|
| | | m/min | ft/min | | kg | lb | kg/m | lb/ft | | l/s | cfm | mm | in | | |
| LLA250-L ATEX ^a | 250 | 18.6 | 61.0 | 1 | 12.7 | 28.0 | 0.9 | 0.6 | Lifting height + 0.5 | 37 | 78 | 12.5 | 1/2 | 1/2 | 8451 1550 17 |
| LLA500-L ATEX ^a | 500 | 12.6 | 41.3 | 1 | 12.7 | 28.0 | 0.9 | 0.6 | Lifting height + 0.5 | 38 | 81 | 12.5 | 1/2 | 1/2 | 8451 1550 25 |
| LLA500-L-W ATEX ^c | 500 | 12.6 | 41.3 | 1 | 12.7 | 28.0 | 0.9 | 0.6 | Lifting height + 0.5 | 38 | 81 | 12.5 | 1/2 | 1/2 | 8451 1540 93 |
| LLA980-L ATEX ^a | 980 | 6.3 | 20.7 | 2 | 14.5 | 32.0 | 0.9 | 0.6 | 2 x Lifting height + 0.5 | 38 | 81 | 12.5 | 1/2 | 1/2 | 8451 1560 15 |
| LLA1000-L ATEX ^b | 1000 | 6.3 | 20.7 | 2 | 15.0 | 33.0 | 0.9 | 0.6 | 2 x Lifting height + 0.5 | 38 | 81 | 12.5 | 1/2 | 1/2 | 8451 1550 32 |
| LLA2500-L ATEX ^b | 2500 | 3.2 | 10.5 | 1 | 42.5 | 93.7 | 2.9 | 1.9 | Lifting height + 0.6 | 40 | 85 | 12.5 | 1/2 | 1/2 | 8451 1550 41 |
| LLA5000-L ATEX ^b | 5000 | 1.6 | 5.2 | 2 | 65.5 | 144.4 | 2.9 | 1.9 | 2 x Lifting height + 0.9 | 40 | 85 | 12.5 | 1/2 | 1/2 | 8451 1550 58 |

^a Without overload protection device.

^b Overload protection device included.

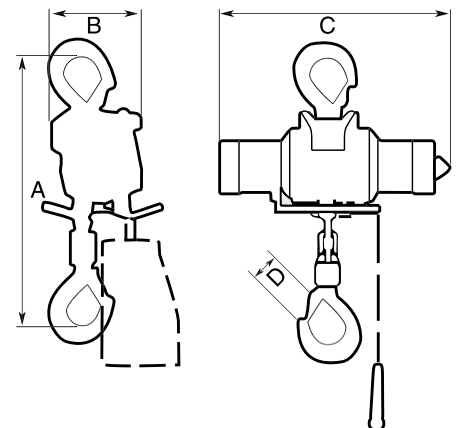
^c Unpainted, corrosion resistant.

Performance figures are at 6.3 bar working pressure.

NOTE: Load chain and control chain must be ordered separately.

Dimensions

| Model | A | | B | | C | | D | |
|----------------|-----|------|-----|-----|-----|------|----|-----|
| | mm | in | mm | in | mm | in | mm | in |
| LLA250-L ATEX | 377 | 14.8 | 122 | 4.8 | 390 | 15.4 | 29 | 1.1 |
| LLA500-L ATEX | 377 | 14.8 | 122 | 4.8 | 390 | 15.4 | 29 | 1.1 |
| LLA980-L ATEX | 445 | 17.5 | 122 | 4.8 | 390 | 15.4 | 29 | 1.1 |
| LLA1000-L ATEX | 495 | 19.4 | 122 | 4.8 | 390 | 15.4 | 29 | 1.1 |
| LLA2500-L ATEX | 575 | 22.6 | 212 | 8.3 | 546 | 21.5 | 50 | 2.0 |
| LLA5000-L ATEX | 785 | 30.9 | 249 | 9.8 | 546 | 21.5 | 60 | 2.4 |



Atlas Copco trolleys are available in 3 sizes, for maximum loads of 1, 3 and 5 tonnes. All models can be offered with air motor drive. The 1 tonne trolley includes motor without pedant control. The 3 and 5 tonne includes handle for control chain (control chain must be ordered separately). The 1 and 3 tonne trolleys are also available in manual versions.

- Lubrication free.



| Model | Max capacity kg | Max speed with full load | | Air consumption | | Beam width | | Curve radius min | | Weight | | Ordering No. |
|--------------------------|--------------------|--------------------------|--------|-----------------|-----|------------|----------|------------------|------|--------|-----|--------------|
| | | m/min | ft/min | l/s | cfm | mm | in | mm | in | kg | lb | |
| Manual | | | | | | | | | | | | |
| TLT1000-H-N | 1000 | - | - | - | - | 50-160 | 2-6.3 | 1250 | 50 | 9.4 | 21 | 8451 1520 06 |
| TLT1000-H-W | 1000 | - | - | - | - | 161-280 | 6.3-11 | 1250 | 50 | 11 | 24 | 8451 1520 63 |
| TLT3000-H-N | 3000 | - | - | - | - | 74-180 | 2.9-7.1 | 2200 | 86.6 | 32 | 70 | 8451 1520 55 |
| TLT3000-H-W | 3000 | - | - | - | - | 181-300 | 7.1-11.8 | 2200 | 86.6 | 34 | 75 | 8451 1520 89 |
| Motor driven | | | | | | | | | | | | |
| TLT1000-M-N ^a | 1000 | 14 | 45.9 | 4 | 8.5 | 50-160 | 2-6.3 | 1250 | 50 | 11 | 24 | 8451 1520 14 |
| TLT1000-M-W ^a | 1000 | 14 | 45.9 | 4 | 8.5 | 161-280 | 6.3-11 | 1250 | 50 | 12 | 27 | 8451 1520 71 |
| TLT3000-M-N ^b | 3000 | 17.8 | 58.4 | 42 | 89 | 74-180 | 2.9-7.1 | 2200 | 86.6 | 48 | 106 | 8451 1520 30 |
| TLT3000-M-W ^b | 3000 | 17.8 | 58.4 | 42 | 89 | 181-300 | 7.1-11.8 | 2200 | 86.6 | 52 | 114 | 8451 1520 97 |
| TLT5000-M ^b | 5000 | 16.2 | 53.1 | 42 | 89 | 181-300 | 7.1-11.8 | 2500 | 98.4 | 74 | 163 | 8451 1520 48 |

^a Pendant control must be ordered separately.

^b Includes handle for control chain. Control chain must be ordered separately.

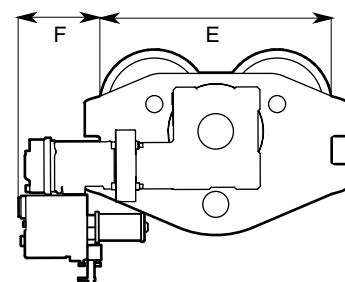
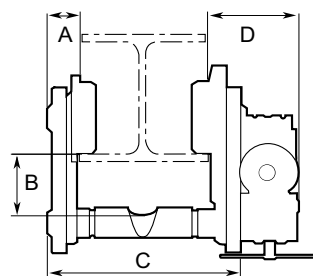
Performance figures are at 6.3 bar working pressure.

Motor-driven trolleys have 1/2" BSP air connection.

12.5 mm (1/2") hose size is recommended for TLT1000-MN/MW, 20 mm for TLT3000-MN/MW and TLT5000-M.

Dimensions

| Model | A | | B | | C | | D | | E | | F | |
|---------------------|----|-----|----|-----|-----------------|------------------|-----|-----|-----|------|----|-----|
| | mm | in | mm | in | mm | in | mm | in | mm | in | mm | in |
| Manual | | | | | | | | | | | | |
| TLT1000-H-N | 26 | 1.1 | 52 | 2.0 | 212 | 8.3 | - | - | 264 | 10.4 | - | - |
| TLT1000-H-W | 26 | 1.1 | 52 | 2.0 | Beam width + 57 | Beam width + 2.3 | - | - | 264 | 10.4 | - | - |
| TLT3000-H-N | 35 | 1.4 | 78 | 3.1 | 262 | 10.3 | - | - | 384 | 15.2 | - | - |
| TLT3000-H-W | 35 | 1.4 | 78 | 3.1 | Beam width + 89 | Beam width + 3.5 | - | - | 384 | 15.2 | - | - |
| Motor driven | | | | | | | | | | | | |
| TLT1000-M-N | 24 | 1.0 | 52 | 2.0 | 212 | 8.3 | 225 | 8.9 | 264 | 10.4 | - | - |
| TLT1000-M-W | 24 | 1.0 | 52 | 2.0 | Beam width + 57 | Beam width + 2.3 | 225 | 8.9 | 264 | 10.4 | - | - |
| TLT3000-M-N | 37 | 1.5 | 78 | 3.1 | 262 | 10.3 | 148 | 5.9 | 380 | 15.0 | 94 | 3.7 |
| TLT3000-M-W | 37 | 1.5 | 78 | 3.1 | Beam width + 89 | Beam width + 3.5 | 148 | 5.9 | 380 | 15.0 | 94 | 3.7 |
| TLT5000-M | 41 | 1.6 | 93 | 3.7 | Beam width + 97 | Beam width + 3.8 | 166 | 6.6 | 437 | 17.2 | 59 | 2.4 |



Accessories Included

FOR HOISTS

Wooden handle for pull chain
 Hose nipple BSP 1/2"
 Suspension hook and load hook

FORTROLLEYS

TLT3000-MN/MW/5000-M
 Wooden handle for pull chain

Optional Accessories

FOR AIR HOISTS

| Designation | LLA250/500/ 980/1000 ATEX Ordering No. | LLA500-L-W ATEX Ordering No. | LLA2500/ 5000 ATEX Ordering No. |
|-----------------------------------|--|---------------------------------|---------------------------------------|
| Load chain, zinc plated, per m | 4310 2293 00 | 4310 2293 00 | 4310 2296 00 |
| Control chain, zinc plated, per m | 4310 0748 00 | 4310 0748 00 | 4310 0748 00 |
| 2 button pendant control | | | |
| Handle and actuators only | 4310 2261 90 | 4310 2261 90 | 4310 2262 90 |
| Hose set per m | 4310 2310 91 | 4310 2310 91 | 4310 2310 91 |
| 4 button pendant control | | | |
| Handle and actuators only | 4310 2263 90 | – | 4310 2264 90 |
| Hose set per m | 4310 2310 96 | – | 4310 2310 95 |
| Twist rod control | | | |
| Complete (1.1-2.0 m) | 4310 0774 91 | 4310 0774 91 | 4310 0774 91 |
| Extension set (1.1-1.9 m) | 4310 0780 91 | 4310 0780 91 | 4310 0780 91 |
| Articulating link | 4310 0876 91 | 4310 0876 91 | 4310 0876 91 |
| Chain collectors | | | |
| PVC for length of chain | | | |
| – 4 m | 4310 0742 04 | 4310 0742 04 | – |
| – 7 m | 4310 0742 07 | 4310 0742 07 | 4310 2291 07 |
| –12 m | 4310 0742 12 | 4310 0742 12 | – |
| –18 m | 4310 0742 18 | 4310 0742 18 | – |
| –25 m | 4310 0742 25 | 4310 0742 25 | – |
| Chain collectors | | | |
| Steel for length of chain | | | |
| –12 m | – | – | 4310 2102 80 |
| –18 m | – | – | 4310 2109 80 |
| Overload protection device | | | |
| LLA250 ATEX | 4310 0812 83 | – | – |
| LLA500 ATEX | 4310 0812 84 | 4310 0812 84 | – |
| LLA980 ATEX | 4310 0812 85 | – | – |
| LLA1000/2500/5000 ATEX | incl as standard | – | incl as standard |
| Safety hooks, zinc plated | 4310 0739 01 | 4310 0739 01 | – |
| Chain stop, zinc plated | 4310 0740 91 | 4310 0740 91 | 4310 2097 91 |

NOTE: For items specified per metre, the required length should be indicated by multiplying the Ordering No. by the required length, ie. to order 12 m of chain for an LLA250 the order should be **12 x 4310 2293 00**.

When ordering load chain, follow the recommendations on chain given in the technical data for LLA hoists.

FORTROLLEYS

| Designation | TLT1000-M Ordering No. | TLT3000-M Ordering No. | TLT5000-M Ordering No. |
|---------------------------------|---------------------------|---------------------------|---------------------------|
| Zinc plated control chain per m | | 4310 0748 00 | 4310 0748 00 |
| 2 button pendant control | | | |
| Handle and actuator only | 4310 0835 92 | 4310 2262 91 | 4310 2262 91 |
| Hose kit per m | 4310 2310 97 | 4310 2310 98 | 4310 2310 98 |