

IP900



**Air inserting tool IP900.
For easier and greater accuracy in assembly.**

**Air inserting tool
IP900**

Fiam®
PEOPLE AND SOLUTIONS

Air inserting tool IP900

For easy and accurate fitting of electric connectors

Great use is made of electric connectors in the numerous assembly operations carried out especially in the household appliance, motor vehicle and electromechanical sectors.

Insertion of these connectors requires very long and difficult manual operations by the worker who still needs to use his own hands or other improper equipment. Fiam has designed a special light and compact air inserting tool which, with only a few impulses, **makes the insertion of connectors fast and easy in all their applications, guaranteeing the greatest ergonomics and maximum accuracy when assembling electric connectors.**



The electric connector can be inserted quickly and easily.



Be demanding

Reliability

Long lifetime of the components thanks to careful design and quality of the production on process which results in less maintenance and repair costs

The internal gears guarantee **constant performances** and **long lifetime of the tool**

The air motors employed ensure **high power and maximum output**

Tools are manufactured with high quality materials that guarantee **greater resistance to wear**

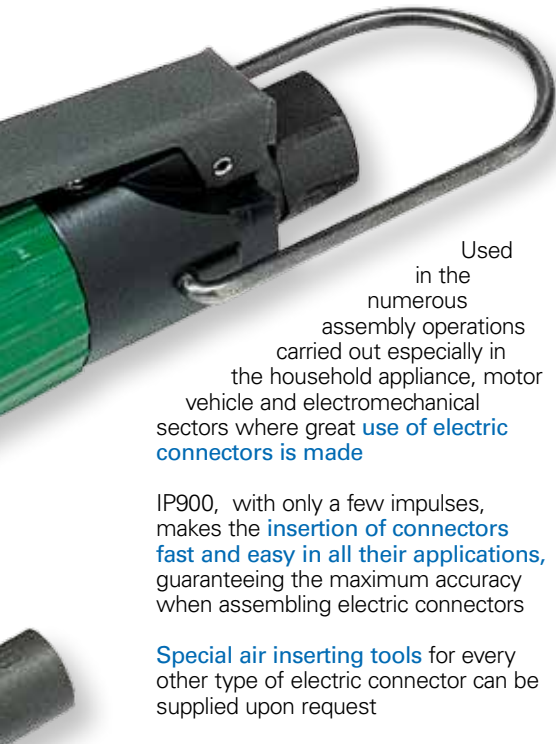


Don't be satisfied with the maximum

Productivity

Great use effectiveness thanks to innovative design systems

They guarantee a **great versatility of use**, making them the perfect answer to every work situation



Used in the numerous assembly operations carried out especially in the household appliance, motor vehicle and electromechanical sectors where **great use of electric connectors is made**

IP900, with only a few impulses, makes the **insertion of connectors fast and easy in all their applications**, guaranteeing the maximum accuracy when assembling electric connectors

Special air inserting tools for every other type of electric connector can be supplied upon request



Perfection is in your hands

Ergonomics

Innovative systems designed paying even more attention with respect to environment and of its safeguard

Reduced weight and compact dimensions make it particularly easy to handle

Hanging ring for balancer use eliminating any operator's effort

Use of air inserting tool IP900 **avoids very long and difficult manual operations by the worker**

ERGOTECH **Ergotech project**
 Having full knowledge of the ergonomics and safety needs of the operator, Fiam optimizes the performances of its tools and offers support and qualified training for the correct use of the tools

Its reduced dimensions make it particularly easy to handle



Naturally innovative

Ecology

Optimization of the tool performances in regard to ergonomics and operator safety


The advanced design technology of the air motors ensures a **reduction of compressed air**, without compromising tool performances

The design of the inner kinematic motions **optimizes the output of the available power**, which is being transmitted with minimum dispersions

All the components are easy to dispose of because they are built **using recyclable materials**; therefore they don't represent a pollution risk or a danger for personal safety

All Fiam products are supplied with **eco-friendly packaging**



Type of the tool		Strokes	Starting system	Weight		Dimensions (mm)	Compressed air consumption	Air inlet	Noise level
Model	Code	min.	Type	Kg.	lb	Ø x l	l/s	Type	dBA
IP900	169975110	900		0,440	0.97	32x204	< 1	1/4" gas	78

Legend



Lever

- The figures shown are measured at a pressure of 3,5 bar (ISO 8662-1), the recommended operating pressure. Max operating pressure: 6,3 bar
- Noise level has been measured in accordance with ISO 3744 and ISO 15744 standards.
- The code number must be used when ordering.

The data given in the table are indicative and can be changed without prior notice. The values indicated for noise are obtained in the laboratory, performing tests that comply with the standards stated, but alone are not sufficient for calculating risks. Values measured in the single work places may be higher than those stated. The values of actual exposure and consequent risks are specific and depend on the operator's method of work, the type of work piece and the work place, as well as the operator's time of exposure and his physical conditions. Fiam cannot be held responsible for any consequences deriving from the use of the information in the table when evaluating risks in the work place over which Fiam has no control. For all further details, please apply to the Fiam Technical Consultancy Service.

Standard equipment (supplied with the tool)

- Hanging ring
- Use and maintenance manual
- Eco-friendly packaging

Other technical features

Accessories available upon request

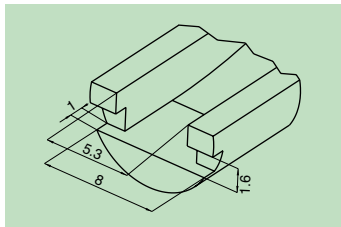
- Bits for male and female insulated or non-insulated electric connectors with a pitch of 6.35 mm.

Bits for connectors

Code 635856010



Length max 50 mm.
Can be used only for male and female **non-insulated** electric connectors.

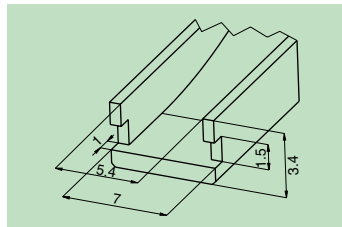


Bits for connectors

Code 635856015



Length max 50 mm.
Can be used only for male and female **insulated** electric connectors.

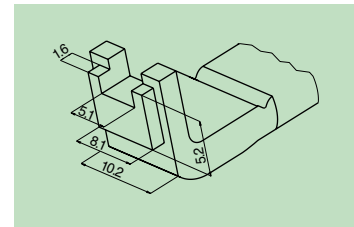


Bits for connectors

Code 635856020



Length max 51 mm.
Can be used only for male and female electric connectors, both **insulated and non-insulated**.
The special form of the head aids the "guided" insertion of the insulated electric connector.



- On request or according to drawing, special bits can be supplied **for every other type of electric connector**. Specify the pitch and send a sample.

- Bits, hexagonal sockets; balancers, exhaust silencers and other compressed air system accessories: see Accessories catalogue.

Fiam[®]
PEOPLE AND SOLUTIONS

Fiam Utensili Pneumatici Spa
Viale Crispi 123 - 36100 Vicenza - Italy
Tel. +39.0444.385000
Fax +39.0444.385002

customerservice@fiamairtools.com
www.fiamairtools.com



Quality Management
System Certificate



Environmental Management
System Certificate