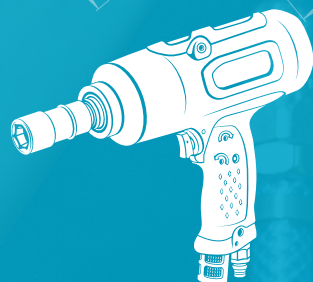


Atlas Copco

Ergopulse PTI

Pulse Tool Innovation



The new generation of pulse tools

Tired of servicing your tool too often?

Interested in having a faster production line?
Do you want to have high operator comfort?
Don't look further... We have designed the new PTI Pulse Tool with your needs in mind!

The PTI will reduce your total cost of ownership and give you increased value.

Here's how:

- It reduces the need of maintenance
- It improves the production quality throughout
- It is designed with superior ergonomics



¹ Up to 5 times longer tool uptime, depending on application.



Good for you, your operators, and for your company's business

up to
5x

Longer time between service

... with our DuraPulse® technology. The PTI will be your new work horse that reduces the need of maintenance¹



Faster production

... with our TorqueBoost®. The torque built-up is even faster, giving you reduced hours per production unit



Excellent ergonomics for the operator

... to reduce work related costs due to operator fatigue and injuries



Improved quality

... with a more robust and stable shut-off mechanism



Optimal performance

... throughout the lifetime of the tool with the right startup and maintenance



Ergopulse PTI

Model	Bolt size mm	Square drive in	Torque range ^a		Free speed ^b r/min	Weight		Length mm	CS distance mm	Air consumption under load		Rec. hose size mm	Air inlet thread in	Ordering No
			Nm	ft lb		kg	lb			l/s	cfm			
High pressure^c														
EP5PTI19 HR10-MT	M6	3/8	8-19	6-14	7300	0.9	2	168	23	6.5	14	8	1/4	8431 0381 30
EP6PTI32 HR10-MT	M6-M8	3/8	16-32	12-23	9000	0.9	2.0	168	23	6	13	8	1/4	8431 0381 40
EP7PTI55 HR10-MT	M8-M10	3/8	30-55	22-40	7000	1.2	2.5	179	27	9	19	10	1/4	8431 0381 50
EP8PTI70 HR10-MT	M10	3/8	40-70	29-51	7100	1.3	2.8	179	27	10	21	10	1/4	8431 0381 55
EP13PTI150 HR13-MT	M12-M14	1/2	85-150	63-110	5300	2.3	5	201	34	15	32	13	3/8	8431 0381 70
Low pressure^d														
EP5PTI15 HR10-MT-L	M5	3/8	7-15	5-11	6900	0.9	2	168	23	6.3	13	8	1/4	8431 0382 30
EP6PTI25 HR10-MT-L	M6	3/8	13-25	9-18	8200	0.9	2.0	168	23	6	13	8	1/4	8431 0382 40
EP7PTI35 HR10-MT-L	M6	3/8	23-35	17-26	6200	1.2	2.5	179	27	6	15	10	1/4	8431 0382 50
EP8PTI45 HR10-MT-L	M6-M8	3/8	33-45	24-33	6300	1.3	2.8	179	27	8	17	10	1/4	8431 0382 55
EP13PTI110 HR13-MT-L	M12-M14	1/2	63-110	46-81	4000	2.3	5	201	36	16	34	13	3/8	8431 0382 70

Accessory	Ordering number
Oil filling kit	4250 3220 90
Protective cover EP5/6PTI	4250 3209 00
Protective cover EP7/8PTI	4250 3206 00
Protective cover EP13PTI	4250 3214 00

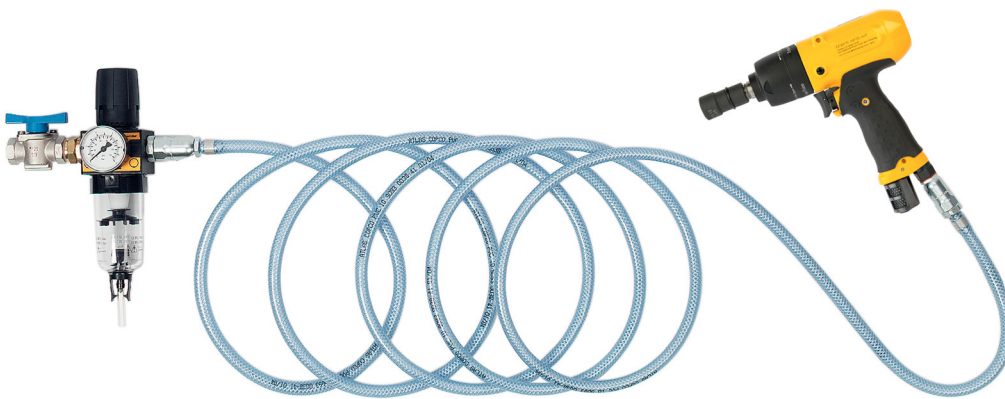
Protective cover is included for every tool

^a To be used as a guide only, final torque depends on type of joint, accessories used and air pressure.

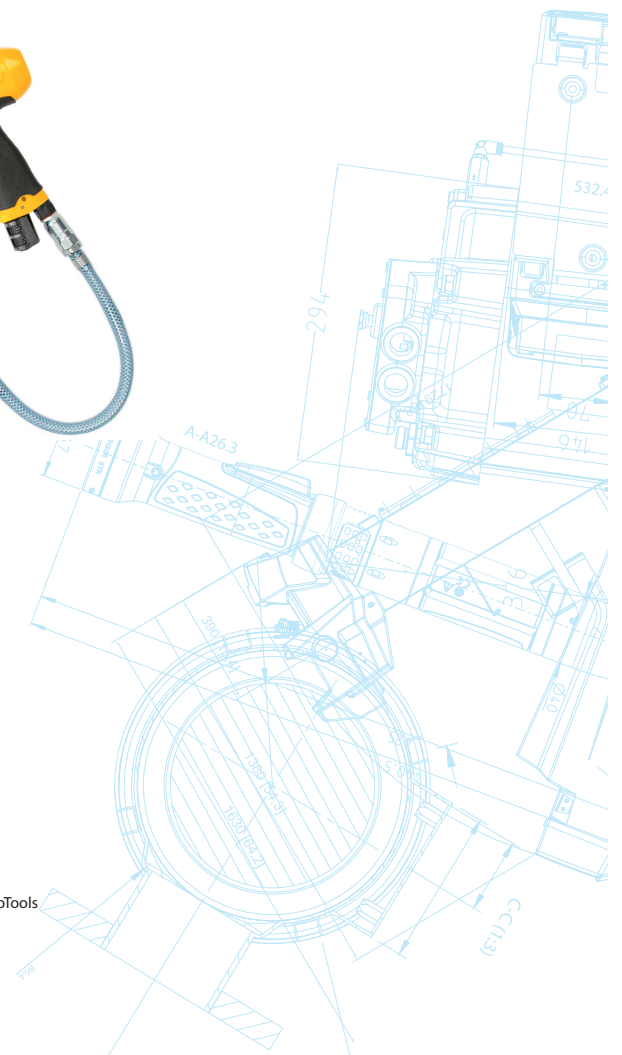
^b In full speed mode

^c Air pressure 6.3 bar / 91 psi

^d Air pressure 4 bar / 58 psi



See more of our accessories and spare parts on
<http://www.atlascopco.co.uk/en-uk/itba/products/air-line-infrastructure>
<https://servaid.atlascopco.com>



AtlasCopcoTools | Industrial tools and solutions |

atlascopco.com

YouTube pcoTools